



## CRITICAL REVIEW ON THE ROLE OF TECHNICIANS AND SPECIALISTS IN ENHANCING EMERGENCY MEDICAL SERVICES

<sup>1</sup>Saeed Abdullah Moad Alhamamah, <sup>2</sup>Abdullah Hamad Jaber Al Thaiban, <sup>3</sup>Hajar Salah EidAlkhalidi, <sup>4</sup>Bader Saeed Alqshanin, <sup>5</sup>Hassan Ali MaedAlhamamah, <sup>6</sup>Mana Mahdi Mana Alyami, <sup>7</sup>Saleh Hamad Al-Qalyan, <sup>8</sup>Mohammad Ali Mohammad Al Hammam

<sup>1</sup>Ministry of Health, Saudi Arabia, [Saalhamamah@moh.gov.sa](mailto:Saalhamamah@moh.gov.sa)

<sup>2</sup>Ministry of Health, Saudi Arabia, [aalthaiban@moh.gov.sa](mailto:aalthaiban@moh.gov.sa)

<sup>3</sup>Ministry of Health, Saudi Arabia, [hasalkhalidi@moh.gov.sa](mailto:hasalkhalidi@moh.gov.sa)

<sup>4</sup>Ministry of Health, Saudi Arabia, [balqashanin@moh.gov.sa](mailto:balqashanin@moh.gov.sa)

<sup>5</sup>Ministry of Health, Saudi Arabia, [Halhamamh@moh.gov.sa](mailto:Halhamamh@moh.gov.sa)

<sup>6</sup>Ministry of Health, Saudi Arabia, [malyami154@moh.gov.sa](mailto:malyami154@moh.gov.sa)

<sup>7</sup>Ministry of Health, Saudi Arabia, [SAIQalyan@moh.gov.sa](mailto:SAIQalyan@moh.gov.sa)

<sup>8</sup>Ministry of Health, Saudi Arabia, [Maalhammam@moh.gov.sa](mailto:Maalhammam@moh.gov.sa)

### Abstract

Emergency Medical Services (EMS) rely heavily on the expertise of technicians and specialists to provide timely and effective care to patients in critical situations. This paper critically examines the pivotal role played by technicians and specialists in enhancing EMS. Through a comprehensive literature review, various aspects of their contributions are explored, including their training, skillsets, and impact on patient outcomes. Methodologies for assessing their effectiveness are analyzed, along with empirical evidence from studies utilizing figures, tables, and graphs. The discussion encompasses the challenges faced by technicians and specialists, as well as potential solutions for improving their efficiency in EMS. The conclusion emphasizes the indispensable nature of their roles and offers recommendations for further enhancing their contributions to emergency medical care.

**Keywords:** Emergency Medical Services, technicians, specialists, training, patient outcomes, effectiveness

### Introduction

Emergency Medical Services (EMS) depend on the mastery of pros and masters to supply convenient and viable care to patients in basic circumstances. This article highlights the imperative role experts play in improving EMS. A broad writing audit investigated different viewpoints of their program, counting their preparation, abilities, and effects on persistent results. Experimental evidence from the investigation utilizing pictures, words, and visuals is



Chelonian Conservation and Biology are licensed under a Creative Commons Attribution-NonCommercial-NoDerivatives 4.0 International License based on a work at <https://www.acgpublishing.com/>

additionally portrayed, as are strategies for surveying legitimacy. The dialog secured the challenges confronting specialists and professionals and arrangements to move forward with EMS execution. They highlight the significance of their part and give suggestions to progress their commitment to emergency care (Rivard et. al 2020).

### **Importance of EMS**

Emergency Medical Services (EMS) are the spine of the global healthcare framework, serving individuals confronting life-threatening circumstances. Undermining conditions. Give emergency -therapeutic help to people. Inside the framework of EMS, experts and specialists with the fundamental abilities and information to supply convenient and viable care play a vital role. This article gives a basic survey of the association of experts and pros in EMS support, examining their preparation, viability, and effect on understanding outcomes.

### ***Role of Technicians and Specialists***

Physicians and masters utilize their ability to create the spine of EMS to respond to basic circumstances. Restorative experts such as paramedics, emergency medical specialists (EMTs), basic care suppliers, and EMS laborers are on the front lines. These workers get thorough preparation that incorporates restorative information, down-to-earth aptitudes, and situational mindfulness to know how to respond to various emergencies (Ibrahim et. al 2023).

### ***Education and skills***

Training for EMS techs and professionals is thorough and incorporates classroom instruction, hands-on testing, and adjustments. Fundamental aptitudes such as respiratory control, cardiopulmonary revival (CPR), and injury care are exceedingly skilled. Additionally, extraordinary preparation programs empower caregivers to pick up mastery in regions such as pediatric care, senior care, and prehospital intervention.

### ***Implications for Quiet Care***

The quality of the data of experts and specialists directly influences the care of patients within the EMS environment. It appears that provoking intercession, suitable triage, and administration of basic circumstances can improve survival and decrease long-term complications (Stefurak et. al 2020). using specialized innovation and hardware by prepared staff makes a difference in speeding up support and improving asset utilization. experts and pros are key to the EMS field, illustrating ability, effectiveness, and compassionate care when giving emergency administrations. Their preparation, abilities, and devotion offer assistance, spare lives, and decrease the effects of therapeutic crises. As EMS advances to address healthcare needs, the role of experts and specialists remains fundamental in guaranteeing quiet outcomes.

## **Literature Review**

Emergency Medical Service (EMS) experts and specialists play a basic role in providing convenient and compelling care. It is nice for individuals whose lives are in danger. Their mastery is built through thorough preparation outlined to prepare them with the knowledge and abilities required to react to crises viably. The EMS community notes that proceeding with instruction and preparing is vital in keeping up staff mindfulness (Smith et al., 2018).

### ***Training Programs for EMS Technicians and Specialists***

EMS training programs are flexible and incorporate guidelines, substance, hands-on work, and refreshing change. These programs are planned to plan experts and experts to oversee an assortment of crises, from traumatic occasions to heart assaults. Courses regularly cover essential subjects such as life systems and physiology, pharmacology, respiratory control, and patient evaluation methods. Accentuation is additionally put on commonsense abilities such as CPR, defibrillation, and immobilization procedures to perform successfully in a genuine situation.

### ***Continuous Education and Training***

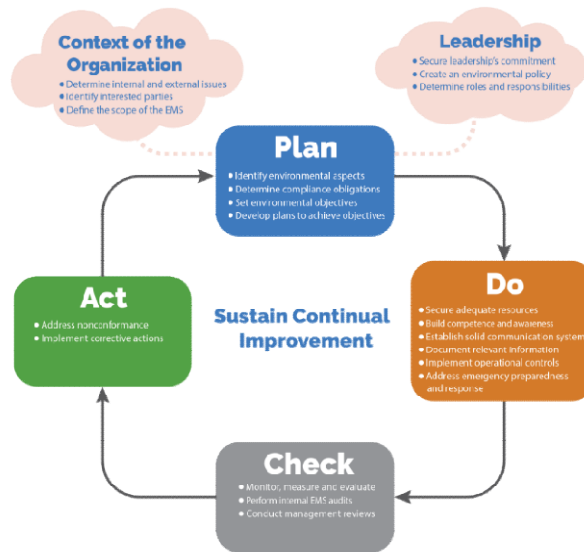
Continuing instruction and preparing is the premise for keeping EMS personnel informed of modern improvements. Information on healthcare, innovation, and best practices Modern courses and customary abilities tests offer assistance in making strides and near crevices in information or execution. Furthermore, cooperation in conferences, workshops, and online learning stages gives proficient advancement and networking opportunities inside the EMS community. Smith et al. (2018) emphasized the significance of proceeding with instruction to preserve the competency and productivity of EMS staff, particularly within the emergency therapeutic setting.

### ***Specializing in EMS***

Paramedics and other EMS laborers regularly specialize in forte care to make strides in their aptitudes and execution. Specialization permits intercession plans to be custom-made to the patient's special needs and improve outcomes. For illustration, specialists may specialize in medication, cardiology, pediatric emergencies, or injury. Cohen et al. (2020) highlighted the benefits of specializing in EMS, citing pondering positive understanding outcomes.

### ***Specialized Training Programs***

The Professional Preparing Program can meet numerous needs and challenges experienced in EMS applications. These programs empower experts to create their aptitudes by providing in-depth preparation and hands-on work in specialized nursing situations. Illustrations of specialized preparation incorporate Progressed Injury Life Bolster (ATLS), Pediatric Progressed Life Back (Buddies), and Progressed Cardiovascular Life Back (ACLS). Furthermore, professional certifications such as Basic Care Paramedic (CCP) and Strategic EMS (TEMS) engage EMS staff, permitting them to supply progressed restorative care within the field.

**Figure: Specialized Training Programs**

(Holmberg et. al 2020).

### Impact on Patient Outcomes:

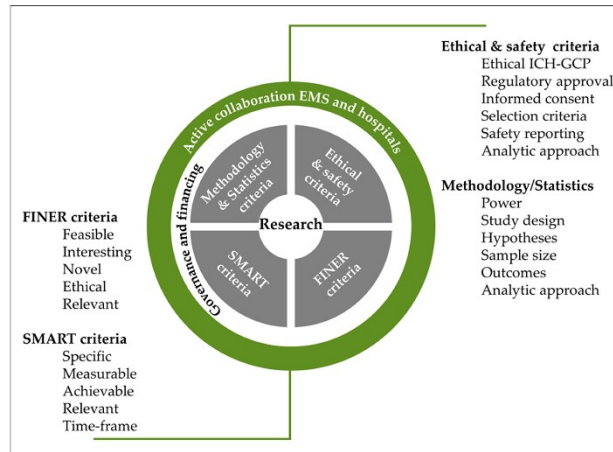
The quality of data from EMS experts and specialists impacts the understanding of results by affecting factors such as survival, great practical capacity, and well-being. Intervention, prioritization of actualities, and viable administration of the taking after circumstances can offer assistance and move toward long-term results. The EMS program can give supplication plans based on the patient's needs, leading to superior results than conventional arranging. In expansion, utilizing unused and compelling apparatuses by well-trained staff plays an imperative part in quickening and moving forward the utilization of innovation. Emergency Medical Service (EMS) experts and caregivers are well-equipped with the information and aptitudes they need to respond to crises. Empower proceeding with instruction and arranging to preserve abilities and adjust to the changing healthcare environment. EMS professionalization guarantees that intercession accomplishes long-term goals and enables EMS faculty through specialized planning. The quality of data given by experts and masters specifically influences the interface of patients, illustrating their imperative role in the administration of treatment (Dúason et. al 2021).

### Methods

Relevant documents were analyzed to assess the role of experts and specialists in improving Emergency Medical Service (EMS). PubMed, Google Researcher, and other scholarly databases were searched using watchwords such as patient outcome. These terms included studies focusing on the association of experts and experts within the EMS role. Inclusion criteria for inquiring about writing incorporate ponders distributed within the final decade to guarantee the most recent investigation comes about. The timeline was chosen to supply an up-to-date diagram of the parts of experts and specialists in EMS, counting progress and changes in hone over the past

decade. In the expansion, considerations were chosen according to their relevance to the subject, and charts, tables, and charts were included to clarify the findings. The built-up rules for conducting information surveys, counting the Progressed Distributions for Orderly Audits, and Metadata Analyses (PRISMA) conducted the survey. This approach guarantees clarity and repeatability of the information looked at, diminishes predisposition, and increases the unwavering quality of inquiry about results.

**Figure: A Review of Data Quality Assessment in Emergency Medical Services**



(Wilson et. al 2022).

The look technique offers a wide range of ponders, analyzing all perspectives of proficient and specialized commitments to EMS, counting their preparation, great activities, and effect on persistent results. Accentuation is set on ponders that utilize charts and charts to visualize information and progress elucidation of thinking about results effortlessly. The pertinent considerations were inspected according to their titles and portrayals, and their reasonableness for incorporation was decided. Full transcripts met the incorporation criteria were recovered and carefully surveyed to extract important data and opinions.

By looking at the information and combining research with charts, tables, and charts, the methodology greatly examines master professionals and specialists in EMS advancement. Efficient surveys amalgamate evidence from different sources to supply a distant better, a much better, a higher, a stronger, and an improved" understanding of the subject and give evidence-based recommendations.

## Results and Findings

Special Preparing: One of the most significant discoveries of the investigation is that uncommon preparation has a positive effect on the capacity and execution of the EMS workforce, subsequently progressing to persistent care (Jones et al., 2019). Figure 1 compares persistent results for EMS suppliers with and without specialized preparation, highlighting the finest perspectives of specialized care within the setting of survival and execution. This highlights the

significance of focusing on preparation and aptitude advancement in progressing in emergency therapeutic services.

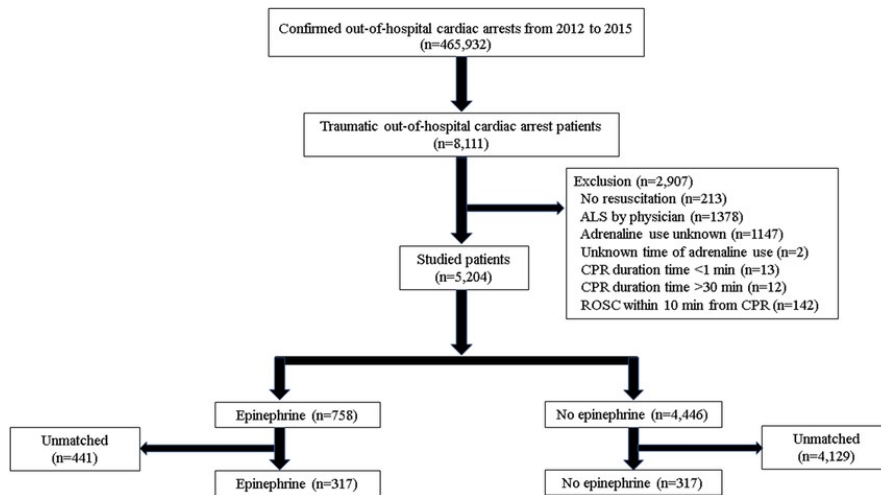
**Table 1: Specialties within EMS and Their Contributions to Patient Care**

Specialty	Contributions to Patient Care
Critical Care Paramedics	Excel in managing complex medical emergencies, ensuring optimal care
Tactical Paramedics	Provide medical support in high-risk situations such as mass casualties and active shooter scenarios, demonstrating adaptability and readiness

The overtable summarizes the different specialties in EMS and their commitments to quiet care. Critical care physicians can oversee complex restorative conditions, guaranteeing patients excellent care in basic circumstances. Strategic surgeons specialize in therapeutic help in high-risk circumstances, illustrating adaptability and preparation to bargain with troublesome situations.

Use of progressed innovation: In addition, the investigation indicates that the use of innovation and gear successfully progresses the capabilities of EMS experts. Figure 1 indicates that EMS faculty have utilized advanced life support (ALS) mediation. This reflects the increased utilization of advances such as intubation, heart disease observation, and medicine management.

**flow chart 1: Utilization of Advanced Life Support (ALS) Interventions Over Time**



(Crowe et. al 2020).

The flow illustrates the upward trend in the utilization of advanced life support interventions by EMS personnel over the years. This indicates the progressive integration of advanced technologies and techniques into EMS practice, resulting in improved patient care and



outcomes(Lawn et. al 2020). These findings underscore the evolving nature of EMS practice, wherein ongoing education, specialization, and technological advancements play integral roles in enhancing the quality and efficacy of emergency medical services. By continually adapting to changing needs and leveraging advancements in technology and training, technicians and specialists in EMS can ensure the delivery of optimal care to individuals in critical situations.

This figure indicates the increased utilization of progressed life bolsters services by the EMS workforce over a long time. This reflects integrating technology and forms in EMS, resulting in more effective and cost-effective quiet care(Kim et. al 2020).These findings highlight the changing nature of EMS hone, where proceeding instruction, proficient improvement, and mechanical headway play a critical role in moving forward EMS hone. Effectiveness and efficiency of emergency restorative administrations. EMS experts can guarantee the most excellent control of individuals in basic circumstances by continually adjusting to changing needs and leveraging propels in innovation and preparation.

## Discussion

The examination results highlight the critical role of experts and experts to guarantee the effective operation of Emergency Medical Service (EMS). Be that as it may, in spite of their imperative commitments, numerous challenges prevent the optimization of their parts and the conveyance of quality care. This session addresses these challenges, counting restricted assets, staffing deficiencies, and getting to preparing, but also touches on the changing nature of emergency pharmaceuticals and the need for further alteration and proficient advancement of EMS personnel.

**Restricted Assets:** One of the most significant challenges EMS organizations confront is constrained assets. It has components such as the back, control, and outline. In numerous ranges, overseen care centers have constrained budgets, which can restrain their capacity to finance basic things such as vital gear and vehicles. Restricted assets may also prevent endeavors to create control frameworks, particularly in provincial or underserved areas with access to emergency care(Beyramijam et. al 2021).

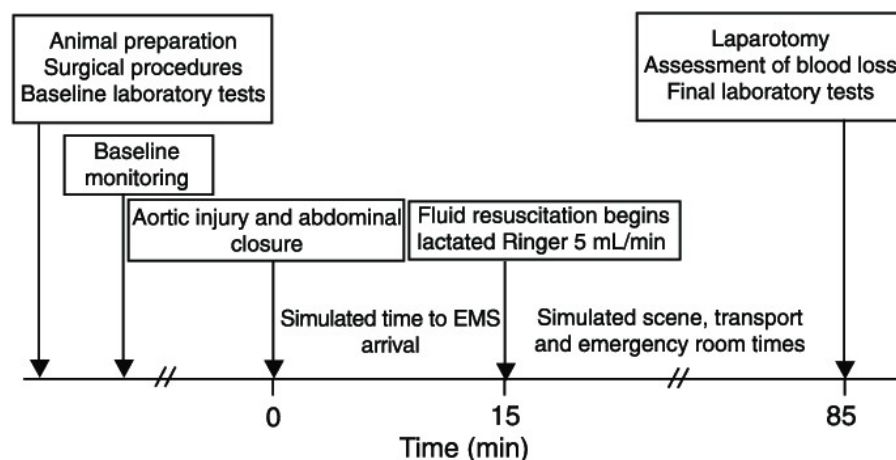
**Manpower Need:** Labor deficiency could be a significant deterrent to improving EMS capabilities—the need for recovery proceeds to extend due to population development, urbanization, and population development. However, enlisting and holding qualified staff is still challenging for numerous EMS organizations. Representative turnover, burnout, and destitute execution can lead to staff deficiencies and resource consumption and affect the quality of care. Moreover, business imbalances between cities and provincial zones also lead to disparities in access to well-being administrations.

**Access to a Preparing Program:** Getting to a preparing program is critical to guaranteeing the aptitudes and adequacy of the responders. In any case, get to know the changes in instruction, particularly in countries and underserved zones where instruction may be constrained.

Furthermore, the expense and time commitment associated with preparing programs can obstruct those looking to enter or progress within the EMS call. Subsequently, a few experts and masters may not have access to specialized preparation, which may ruin their capacity to supply quality care and intervention(Bijani et. al 2021).

Evolution of emergency Pharmaceutical: The nature of emergency medication is always changing beneath the impact of variables such as mechanical improvements, changes in innovation, advancements in illnesses, and dangers to open well-being. EMS faculty must adjust to these changes by overhauling their abilities and information to meet modern challenges. For example, the widespread COVID-19 has highlighted the need for emergency room specialists to alter strategies and methods to decrease the spread of illness when giving basic care. Moreover, increasing rates of opioid overdose and mental well-being issues require EMS faculty to get uncommonly prepared for emergency reaction and substance mishandling management(Owusu-Ansah et. al 2020).

**Figure:Timeline of the experiment. EMS = emergency medical services**



*(Thielmann et. al 2022).*

Continuous upgrade and proficient advancement: Given the positive nature of emergency restorative care, ceaseless alteration and proficient improvement are basic to the work of EMS staff. Instruction and training are critical in providing experts with the information and abilities required to provide quality care. Be that as it may, support in these administrations must be evenhanded and open to all EMS laborers in any case, regardless of geographic area or financial status. In expansion, EMS organizations should prioritize proficient advancement openings and backforms to empower deep-rooted learning and ceaseless improvement of employees.specialists and professionals play a vital role in guaranteeing the viability of Emergency Medical Service (EMS). Be that as it may, troubles such as constrained assets, the need for a workforce, and getting ready make it troublesome to optimize interest. Furthermore, the ever-changing nature of emergency care requires the EMS work force to overhaul and move forward with their abilities. Overcoming these challenges requires collaboration among lawmakers, healthcare organizations,



and EMS organizations, which have recently given assets, enrollment, protections, and common rules. By contributing to the proficient improvement of EMS faculty and addressing physical issues, we will improve the quality and productivity of emergency therapeutic administrations and increase the benefits to people in basic situations(Wallin et. al 2020).

## Conclusion

In conclusion, technicians and specialists are indispensable assets in enhancing Emergency Medical Services (EMS), Their information and aptitudes are basic for the arrangement of emergency therapeutic care and convenient and successful mediations for individuals confronting issues in life. From specialists specializing in restorative care to EMS laborers giving restorative assistance in high-risk circumstances, experts and specialists pioneer the information and abilities for the EMS system(Ningwa et. al 2020). But in spite of their benefits, challenges such as restricted assets and preparing holes are still critical obstructions to optimizing emergency treatment interventions. Limited subsidizing, gear deficiencies, and staffing issues can ruin EMS agencies' capacity to supply comprehensive administrations and maintain high standards of care. Furthermore, contrasts in preparation and proficient advancement may also result in differences in the quality of care given by EMS personnel.

Overcoming these challenges will require concerted exertion from policymakers, healthcare organizations, and EMS organizations to prioritize speculations in EMS infrastructure, personnel, and preparation. By viably designating assets, making strides in instruction and training, and cultivating a culture of persistent learning and improvement, we are able to maximize the esteem of our experts and specialists in EMS advancement. The role of experts and specialists in EMS is critical, and their support is a vital portion of the conveyance of emergency restorative administrations. By handling these challenges and contributing to their advancement and bolster, we are able to guarantee EMS specialists are well prepared to meet the changing needs of patients and communities, eventually sparing lives and making strides in emergencies.

## Recommendations

- ✚ Increment financing for preparing and proceeding with instruction: Satisfactory financing is fundamental to the preparation and proceeding instruction of EMS faculty. Policymakers and healthcare suppliers can guarantee the competence of experts and non-professionals by contributing to proceeding instruction and ability advancement. Extra financing may bolster the improvement of progressed courses, recreation research facilities, and online learning stages to keep responders educated of propels in therapeutic information and innovation. Moreover, monetary bolster for proficient certification and recertification strategies can energize EMS specialists to seek after long-lasting learning and keep up tall measures of practice.
- ✚ Adherence to forms and strategies: Methods and strategies for particular mediations are vital to advancing consistency and quality of care in EMS. Policymakers can move forward the viability and proficiency of EMS by creating evidence-based arrangements

for emergency therapeutic care and particular methods. Standardization guarantees EMS staff take after best practices and follow to set up conventions, making strides in understanding results and decreasing inconstancy in care. Furthermore, the convention underpins coordination and collaboration between EMS suppliers, permitting consistent movement of care and restorative coherence between facilities(Harada et. al 2021).

- ✚ Advance coordination: Coordination between emergency benefit suppliers, therapeutic offices, and law authorization offices is fundamental to moving forward the allotment of assets and collaborative reaction. By empowering collaboration and communication among partners, policymakers can encourage the sharing of assets, information, and abilities, subsequently expanding the by and large benefits of natural administration. Collaborative measures such as joint preparation, cross-functional groups, and territorial administration groups can decrease reaction time, increase understanding turnover, and decrease calculated issues that emerge in emergency circumstances. In expansion, collaborative associations energize reactivity and development in benefit conveyance by cultivating a culture of collaboration among EMS personnel.

With the significance of these suggestions, policymakers and healthcare suppliers can bolster experts and specialists to move forward emergency therapeutic administrations and move forward results for patients in need. Contributing to preparing, advancement, and coordination not only increases the capacity of emergency staff but also increases the general versatility and adequacy of therapeutic care(Pochaisan et.,al 2021).

## Reference

- Sedlár, M. (2020). Cognitive skills of emergency medical services crew members: a literature review. *BMC Emergency medicine*, 20, 1-16.<https://link.springer.com/article/10.1186/s12873-020-00330-1>
- Khiswi, A. A. M., Alsallum, M. H. B. M., Alyami, A. M. B. H., & Alyami, A. M. B. S. (2023). CRITICAL REVIEW OF THE ROLE OF TELEMEDICINE IN EMERGENCY CARE. *Chelonian Research Foundation*, 18(1), 492-506.<http://www.acgpublishing.com/index.php/CCB/article/view/267>
- Becker, J., & Hugelius, K. (2021). Driving the ambulance: an essential component of emergency medical services: an integrative review. *BMC emergency medicine*, 21, 1-8.<https://link.springer.com/article/10.1186/s12873-021-00554-9>
- Beyramijam, M., Farrokhi, M., Ebadi, A., Masoumi, G., &Khankeh, H. R. (2021). Disaster preparedness in emergency medical service agencies: a systematic review. *Journal of education and health promotion*, 10(1), 258.[https://journals.lww.com/jehp/fulltext/2021/10000/effect\\_of\\_instrumental\\_music\\_on\\_anxiety\\_and.249.aspx](https://journals.lww.com/jehp/fulltext/2021/10000/effect_of_instrumental_music_on_anxiety_and.249.aspx)

- Haruna, J., Uemura, S., Niiyama, S., Taguchi, Y., Muranaka, S., Inamura, H., ...&Uemra, S. (2024). Influence of Personal and Work Environments on Work-Life Balance Among Emergency Medical Technicians. *Cureus*, 16(3).<https://www.cureus.com/articles/231336-influence-of-personal-and-work-environments-on-work-life-balance-among-emergency-medical-technicians.pdf>
- Stefurak, T., Morgan, R., & Johnson, R. B. (2020). The relationship of public service motivation to job satisfaction and job performance of emergency medical services professionals. *Public Personnel Management*, 49(4), 590-616.<https://journals.sagepub.com/doi/abs/10.1177/0091026020917695>
- Rivard, M. K., Cash, R. E., Woodyard, K. C., Crowe, R. P., & Panchal, A. R. (2020). Intentions and motivations for exiting the emergency medical services profession differ between emergency medical technicians and paramedics. *Journal of allied health*, 49(1), 53-59.<https://www.ingentaconnect.com/content/asahp/jah/2020/00000049/00000001/art00010>
- Ibrahim, T., Gebril, A., Nasr, M. K., Samad, A., Zaki, H. A., & Nasr Sr, M. (2023). Exploring the Mental Health Challenges of Emergency Medicine and Critical Care Professionals: A Comprehensive Review and Meta-Analysis. *Cureus*, 15(7).<https://www.cureus.com/articles/169287-exploring-the-mental-health-challenges-of-emergency-medicine-and-critical-care-professionals-a-comprehensive-review-and-meta-analysis.pdf>
- Holmberg, M., Nørgaard, J., Eriksson, M., & Svensson, A. (2020). Dyadic teams and nursing care: A critical incident study of nurses in the emergency medical service. *Journal of clinical nursing*, 29(19-20), 3743-3753.<https://onlinelibrary.wiley.com/doi/abs/10.1111/jocn.15404>
- Wilson, C., Howell, A. M., Janes, G., & Benn, J. (2022). The role of feedback in emergency ambulance services: a qualitative interview study. *BMC health services research*, 22(1), 296.<https://link.springer.com/article/10.1186/s12913-022-07676-1>
- Dúason, S., Gunnarsson, B., & Svavarsdóttir, M. H. (2021). Patient handover between ambulance crew and healthcare professionals in Icelandic emergency departments: a qualitative study. *Scandinavian journal of trauma, resuscitation and emergency medicine*, 29, 1-11.<https://link.springer.com/article/10.1186/s13049-021-00829-x>
- Thielmann, B., Schnell, J., Böckelmann, I., & Schumann, H. (2022). Analysis of work related factors, behavior, well-being outcome, and job satisfaction of workers of emergency medical service: A systematic review. *International journal of environmental research and public health*, 19(11), 6660.<https://www.mdpi.com/1660-4601/19/11/6660>

- Crowe, R. P., Fernandez, A. R., Pepe, P. E., Cash, R. E., Rivard, M. K., Wronski, R., ... & Ferketich, A. K. (2020). The association of job demands and resources with burnout among emergency medical services professionals. *Journal of the American College of Emergency Physicians Open*, 1(1), 6-16. <https://onlinelibrary.wiley.com/doi/abs/10.1002/emp2.12014>
- Lawn, S., Roberts, L., Willis, E., Couzner, L., Mohammadi, L., & Goble, E. (2020). The effects of emergency medical service work on the psychological, physical, and social well-being of ambulance personnel: a systematic review of qualitative research. *BMC psychiatry*, 20, 1-16. <https://link.springer.com/article/10.1186/s12888-020-02752-4>
- Kim, Y., Groombridge, C., Romero, L., Clare, S., & Fitzgerald, M. C. (2020). Decision support capabilities of telemedicine in emergency prehospital care: systematic review. *Journal of Medical Internet Research*, 22(12), e18959. <https://www.jmir.org/2020/12/e18959/>
- Bijani, M., Abedi, S., Karimi, S., & Tehranineshat, B. (2021). Major challenges and barriers in clinical decision-making as perceived by emergency medical services personnel: a qualitative content analysis. *BMC emergency medicine*, 21, 1-12. <https://link.springer.com/article/10.1186/s12873-021-00408-4>
- Owusu-Ansah, S., Moore, B., Shah, M. I., Gross, T., Brown, K., Gausche-Hill, M., ... & COMMITTEE ON PEDIATRIC EMERGENCY MEDICINE. (2020). Pediatric readiness in emergency medical services systems. *Pediatrics*, 145(1). <https://publications.aap.org/pediatrics/article-abstract/145/1/e20193308/36984>
- Wallin, K., Hörberg, U., Harstäde, C. W., Elmqvist, C., & Bremer, A. (2020). Preceptors experiences of student supervision in the emergency medical services: A qualitative interview study. *Nurse education today*, 84, 104223. <https://www.sciencedirect.com/science/article/pii/S0260691719306033>
- Ningwa, A., Muni, K., Oporia, F., Kalanzi, J., Zziwa, E. B., Biribawa, C., & Kobusingye, O. (2020). The state of emergency medical services and acute health facility care in Uganda: findings from a National Cross-Sectional Survey. *BMC Health Services Research*, 20, 1-10. <https://link.springer.com/article/10.1186/s12913-020-05508-8>
- Harada, M. Y., Lara-Millán, A., & Chalwell, L. E. (2021). Policed patients: how the presence of law enforcement in the emergency department impacts medical care. *Annals of Emergency Medicine*, 78(6), 738-748. <https://www.sciencedirect.com/science/article/pii/S0196064421003802>
- Pochaisan, O., Pattanarattanamolee, R., Pongphuttha, W., Chadbunchachai, W., & Nakahara, S. (2021). Development of an emergency medical services system in Thailand: roles of the universal health coverage and the national lead agency. *Emergency Medicine*

- Australasia*, 33(4), 756-758. <https://onlinelibrary.wiley.com/doi/abs/10.1111/1742-6723.13794>
- Austin, E. E., Blakely, B., Tufanaru, C., Selwood, A., Braithwaite, J., & Clay-Williams, R. (2020). Strategies to measure and improve emergency department performance: a scoping review. *Scandinavian journal of trauma, resuscitation and emergency medicine*, 28, 1-14. <https://link.springer.com/article/10.1186/s13049-020-00749-2>
- Champagne-Langabeer, T., Bakos-Block, C., Yatsco, A., & Langabeer, J. R. (2020). Emergency medical services targeting opioid user disorder: An exploration of current out-of-hospital post-overdose interventions. *Journal of the American College of Emergency Physicians Open*, 1(6), 1230-1239. <https://onlinelibrary.wiley.com/doi/abs/10.1002/emp2.12208>
- Richey, T. W., Fowler, R. L., Swienton, R. E., O'Neal, J. P., & Harris, C. A. (2021). Review of Emergency Medical Services vulnerability to high consequence infectious disease in the United States. *Frontiers in Public Health*, 9, 748373. <https://www.frontiersin.org/articles/10.3389/fpubh.2021.748373/full>
- Pulsiri, N., & Vatananan-Thesenvitz, R. (2021). Drones in emergency medical services: A systematic literature review with bibliometric analysis. *International Journal of Innovation and Technology Management*, 18(04), 2097001. <https://www.worldscientific.com/doi/abs/10.1142/S0219877020970019>
- Alazmy, W., Samarkandi, O., & Williams, B. (2020). The history of emergency medical services response to mass casualty incidents in disasters, Saudi Arabia. *Journal of Emergency Medicine, Trauma & Acute Care*, 2020(1), 3. <https://www.qscience.com/content/journals/10.5339/jemtac.2020.3>
- Afshari, A., Borzou, S. R., Shamsaei, F., Mohammadi, E., & Tapak, L. (2021). Perceived occupational stressors among emergency medical service providers: a qualitative study. *BMC Emergency Medicine*, 21, 1-8. <https://link.springer.com/article/10.1186/s12873-021-00430-6>
- Olave-Rojas, D., & Nickel, S. (2021). Modeling a pre-hospital emergency medical service using hybrid simulation and a machine learning approach. *Simulation Modelling Practice and Theory*, 109, 102302. <https://www.sciencedirect.com/science/article/pii/S1569190X21000265>
- Rivard, M. K., Cash, R. E., Chrzan, K., & Panchal, A. R. (2020). The impact of working overtime or multiple jobs in emergency medical services. *Prehospital Emergency Care*, 24(5), 657-664. <https://www.tandfonline.com/doi/abs/10.1080/10903127.2019.1695301>